

LTM 1300-6.4

Instruction manual



LIEBHERR

Dear scale model enthusiast

Congratulations – You are now the owner of the Liebherr LTM 1300-6.4 1:50 scale model. At WSI Models we have brought down those similar characteristics of the Liebherr LTM 1300-6.4 to a 1:50 scale model for you to enjoy.

We wish you lots of joy with the new WSI crane model, however please do read this manual carefully in order to set up this crane correctly.

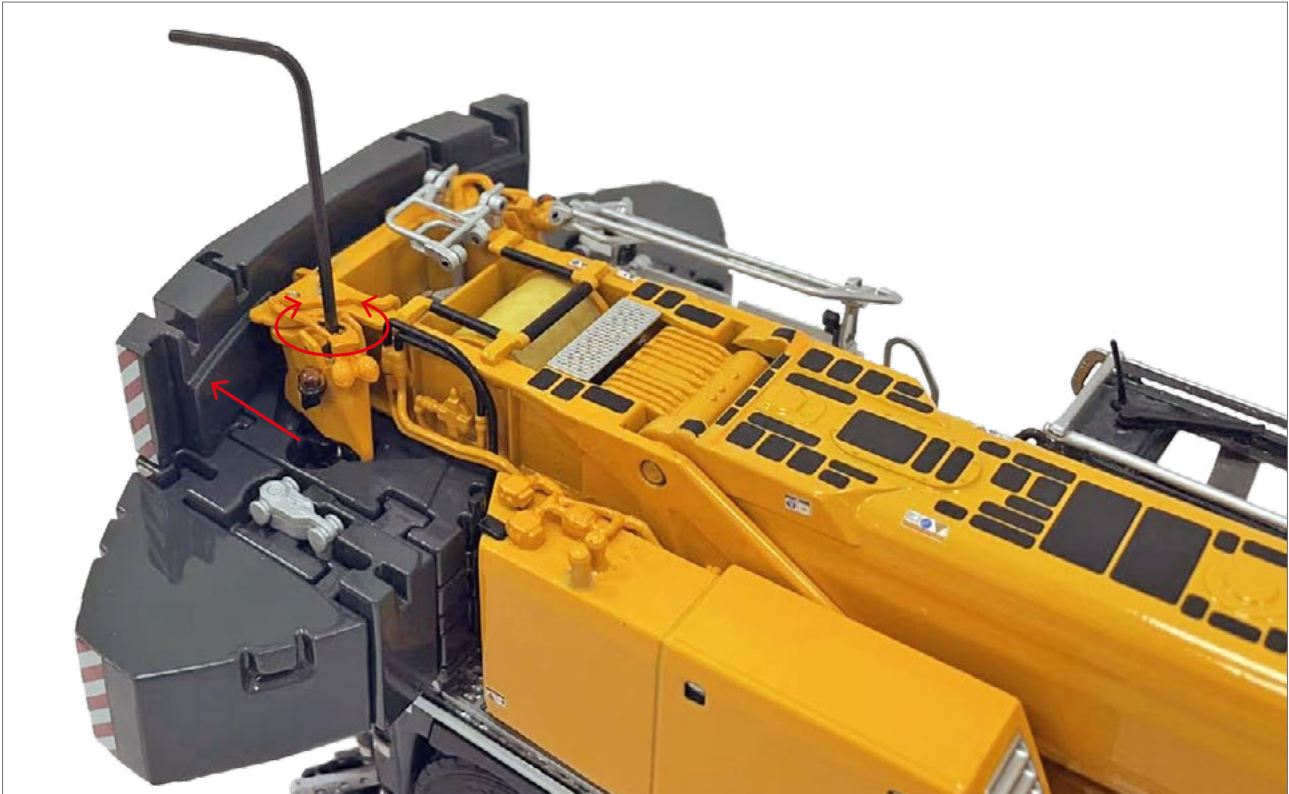
WSI Models



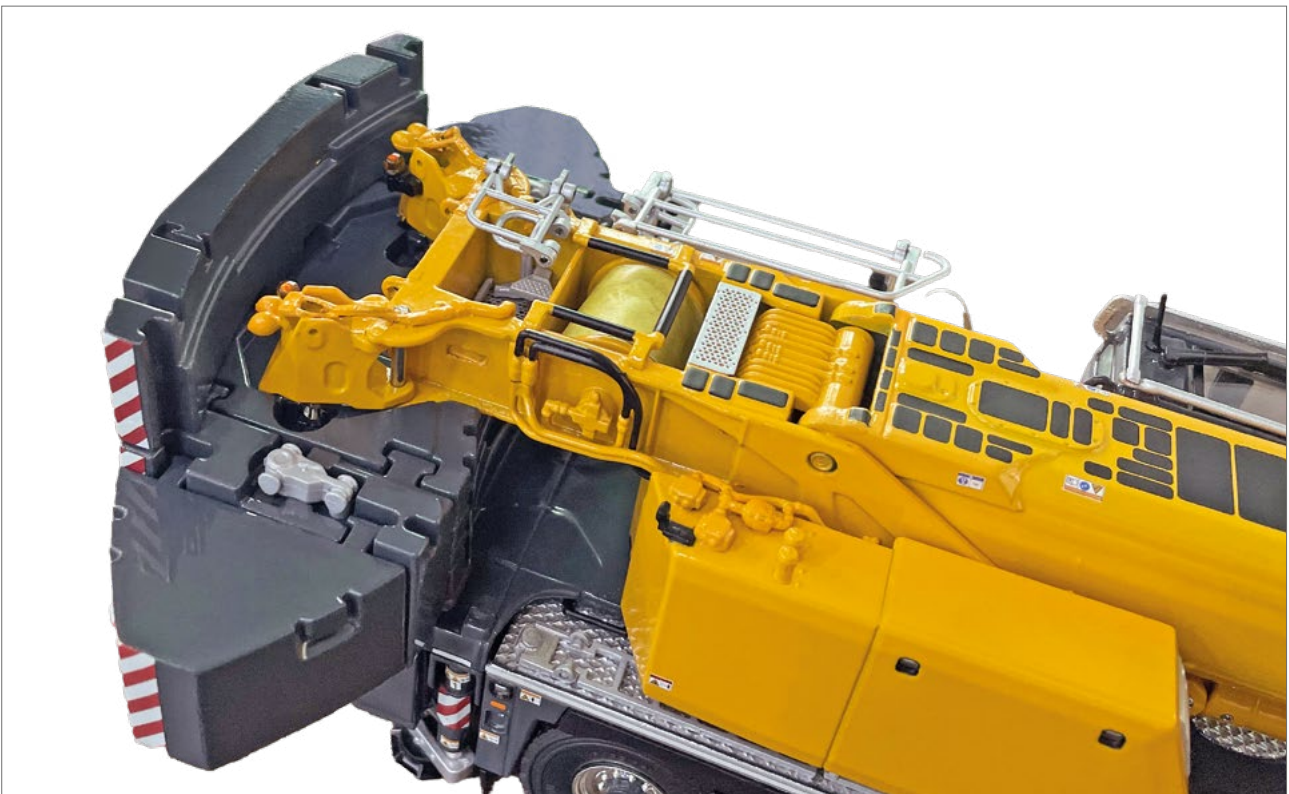
Exploded view ballast package.



Ballast package front position. The position can be changed by loosening the two bolts in the next step.



By turning the bolts with the Allen key the ballast package can be fixed or loosened. When the ballast package is loosened, you can take off the ballast and the ballast arms can be turned backwards.

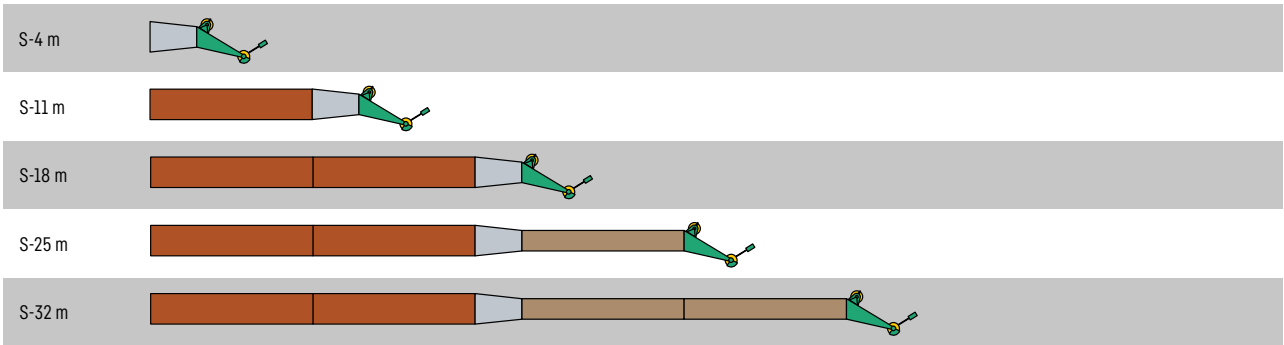






The ballast arms are now backwards and the ballast package is at the big radius position. The ballast can be fixed by turning the Allen key clockwise.

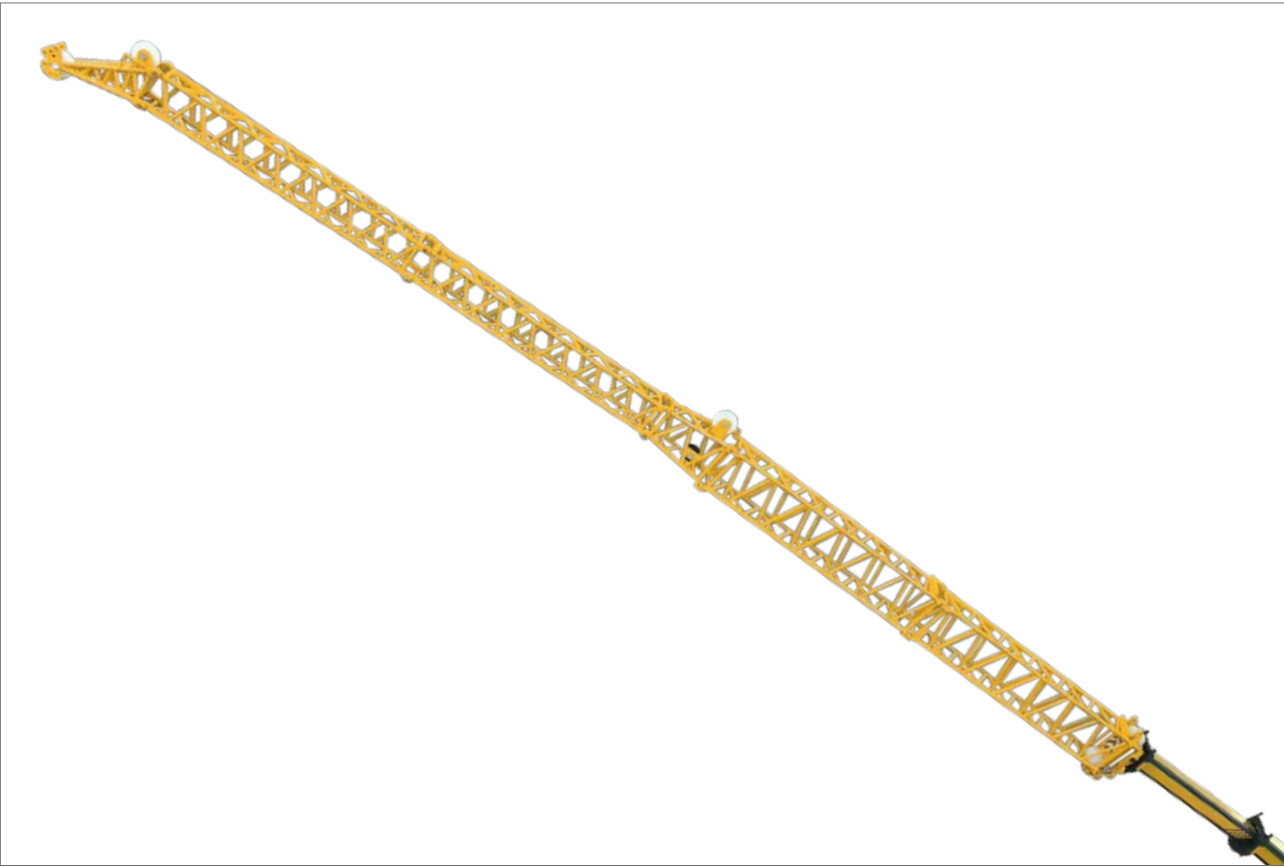
In case you need additional help with these steps for our scale model, the instruction video of the LTM 1090-4.2 will explain the functions step by step.



Boom/jib combinations | *Strong jib*

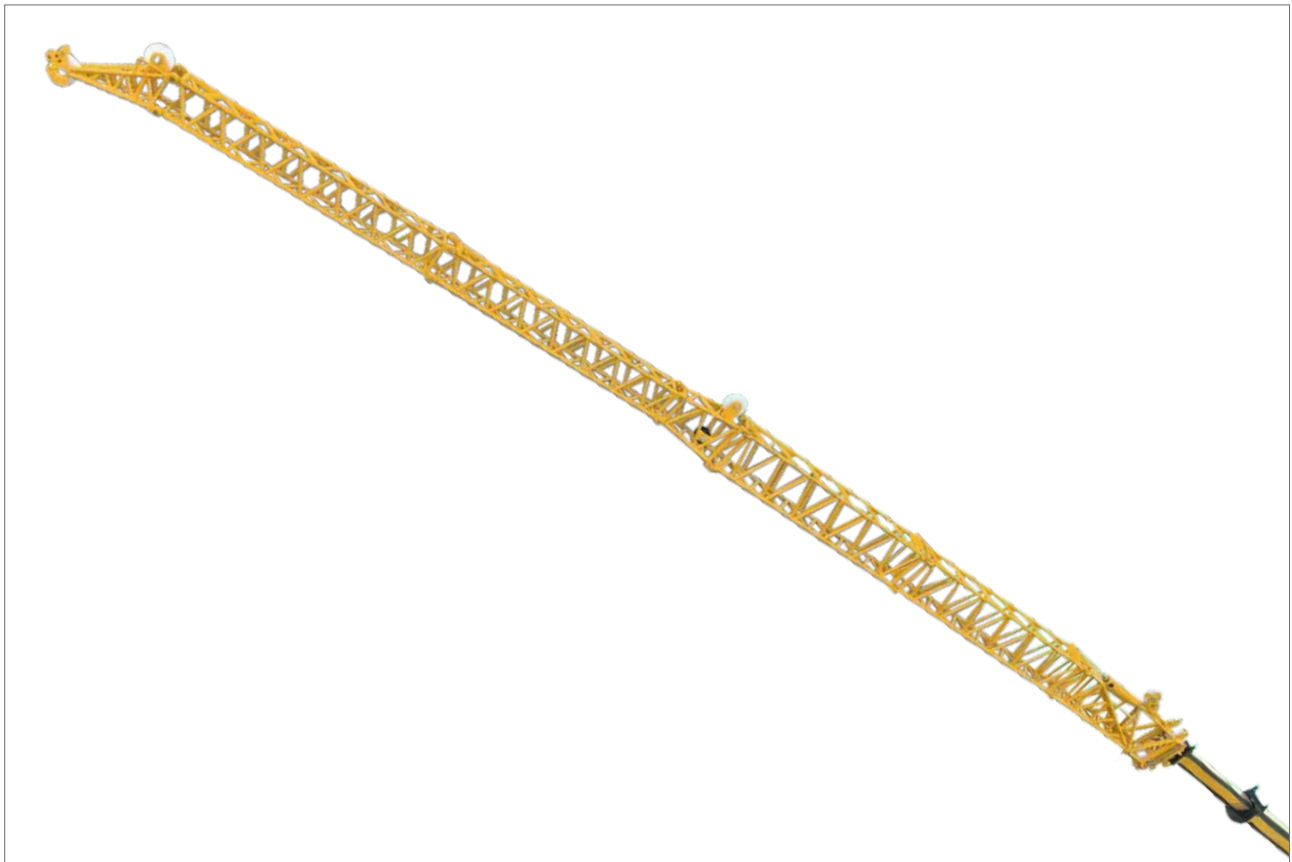
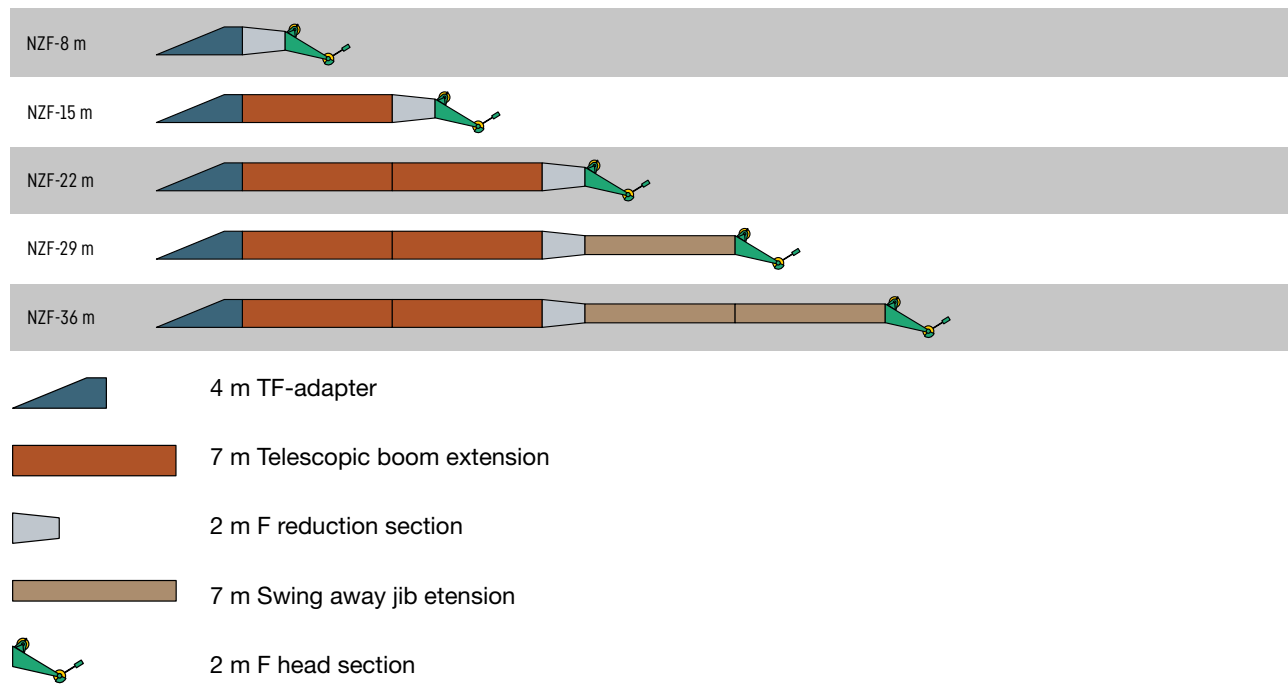


-  7 m Telescopic boom extension
-  2 m F reduction section
-  7 m Swing away jib extension
-  2 m F head section



S-32 m jib

Boom/jib combinations | *Hydraulically adjustable fixed lattice jib*



NZF-36 m jib

LIEBHERR



HIGH QUALITY DIECAST SCALE MODELS