



HIGH QUALITY DIECAST SCALE MODELS

MANUAL

Liebherr LTM 1500-8.1 JIB

Table of Content

Object	Quantity	Object	Quantity
Part 1: Pulley Cart	1	Part 14: 7m NA Intermediate Section	2
Part 2: Pin 1	4	Part 15: 3,5 m NI Reduction Section	1
Part 3: TY-Guying TRAVERSE	1	Part 16: 14 m NI Intermediate Section	2
Part 4: TY-Guying ECCENTRIC	1	Part 17: 7m NI Intermediate Section	1
Part 5: TY-Guying SPACER	1	Part 18: 8 m N Head Section	1
Part 6: Railing	3	Part 19: Boom Nose (<i>can be mounted on 8m and 3,5m Head Sections</i>)	1
Part 7: Tools	2	Part 20: 2,5 m TF Adapter (<i>hydraulic version</i>)	1
Part 8: Nuts		Part 21: 3,5 m Head Section	1
Part 9: Bolts		Part 22: Guy Rod 1 with Jib Guying Ropes	1
Part 10: TN/TF Adapter	1	Part 23: Guy Rod 2	1
Part 11: Telescope Boom Extension	2	Part 24: Guy Rod 3	1
Part 12: 9,5 m N-Shaped Base Section	1	Part 25: Guy Rod 4	1
Part 13: 14 m NA Intermediate Section	2		



Part 1: Pulley Cart



Part 2: Pin 1



Part 3: TY-Guying TRAVERSE



Part 4: TY-Guying ECCENTRIC



Part 5: TY-Guying SPACER



Part 6: Railing



Part 7: Tools



Part 8: Nuts



Part 9: Bolts



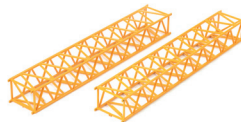
Part 10: TN/TF Adapter



Part 11: Telescope Boom Extension



Part 12: 9,5 m N-Shaped Base Section



Part 13: 14 m NA Intermediate Section



Part 14: 7m NA Intermediate Section



Part 15: 3,5 m NI Reduction Section



Part 16: 14 m NI Intermediate Section



Part 17: 7m NI Intermediate Section



Part 18: 8 m N Head Section



Part 19: Boom Nose (*can be mounted on 8 m and 3,5 m Head Sections*)



Part 20: 2,5 m TF Adapter (*hydraulic version*)



Part 21: 3,5 m Head Section



Part 22: Guy Rod 1 with Jib Guying Ropes



Part 23: Guy Rod 2



Part 24: Guy Rod 3



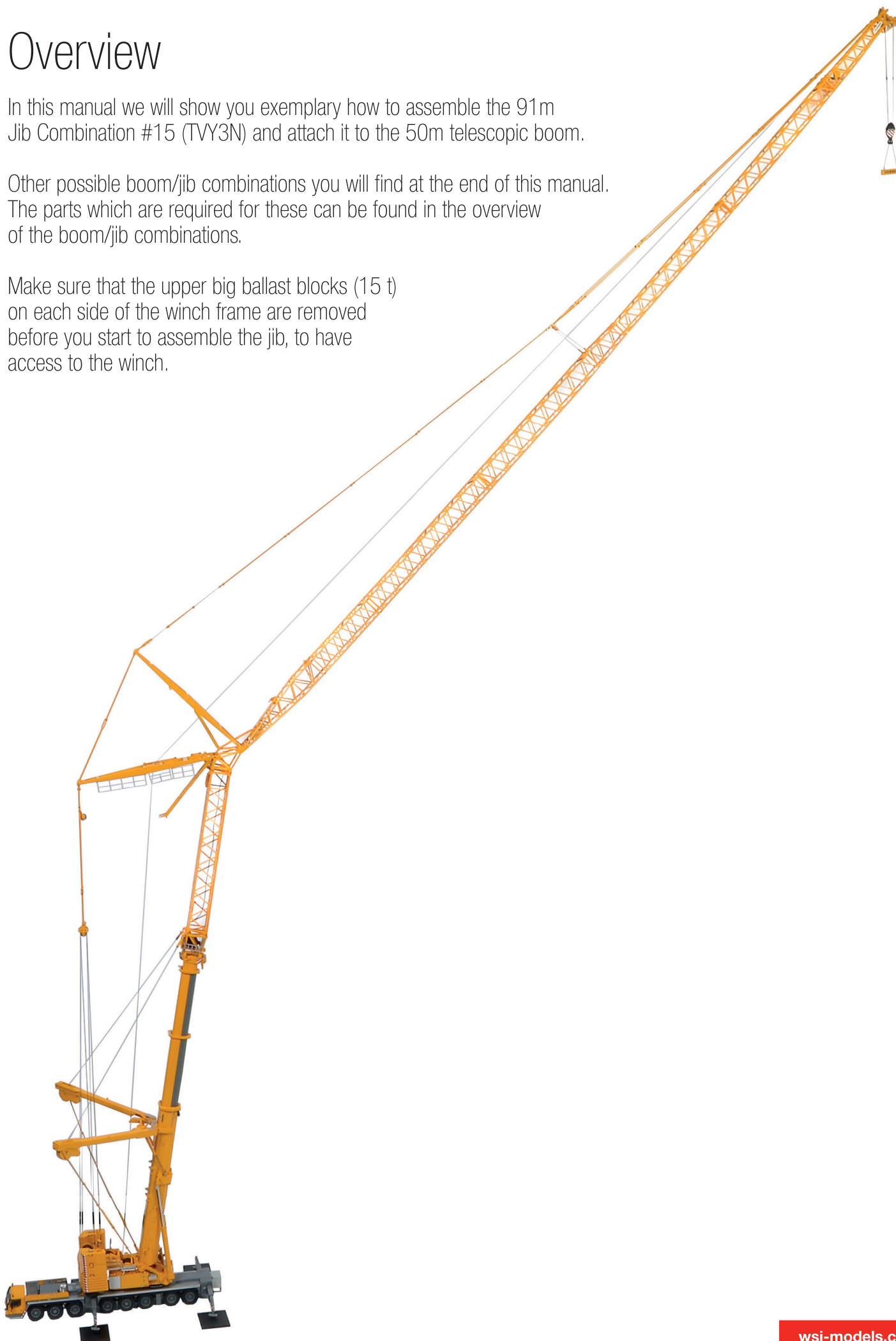
Part 25: Guy Rod 4

Overview

In this manual we will show you exemplary how to assemble the 91m Jib Combination #15 (TVY3N) and attach it to the 50m telescopic boom.

Other possible boom/jib combinations you will find at the end of this manual. The parts which are required for these can be found in the overview of the boom/jib combinations.

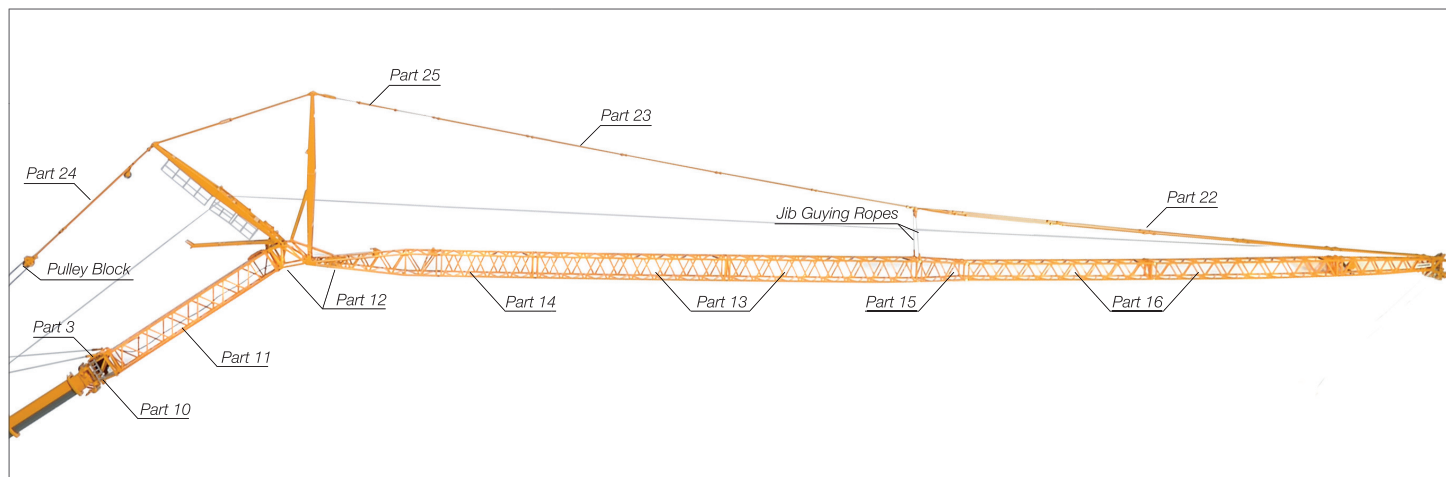
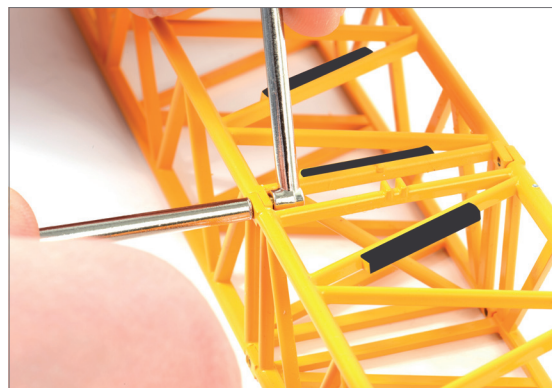
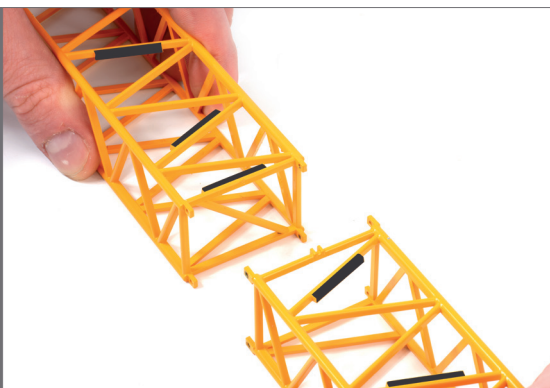
Make sure that the upper big ballast blocks (15 t) on each side of the winch frame are removed before you start to assemble the jib, to have access to the winch.



Step 1

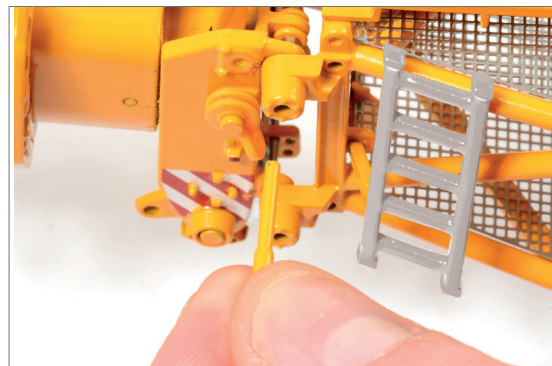
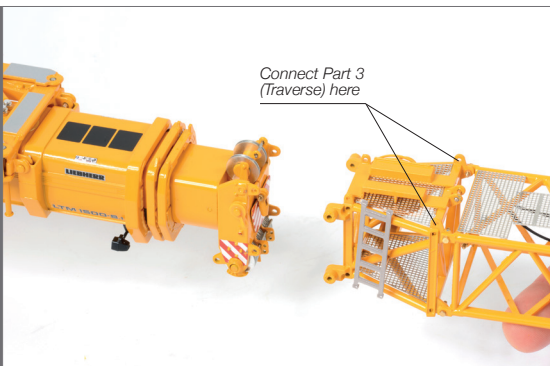
Please assemble the jib with all parts step by step according to the picture you see below.

Mount Part 3
(TY-Guying TRAVERSE)
on the TN/TF-Adapter.



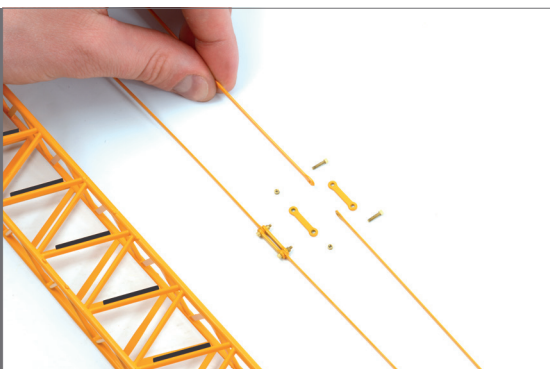
Step 2

Connect the assembled jib combination to the head of the 50m telescopic boom by using Pins 1.



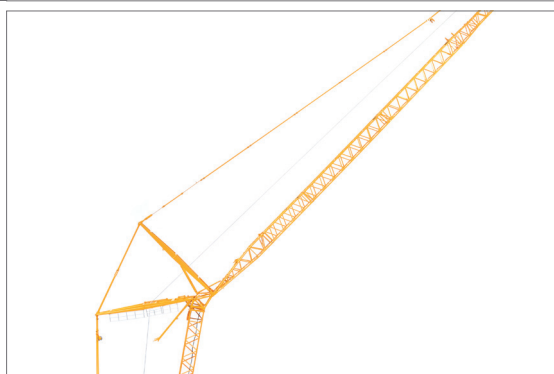
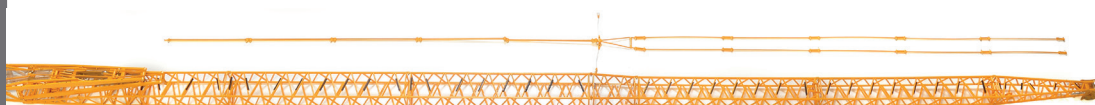
Step 3

Please assemble the Guy Rods in the required length. See also illustration pictures (step 1 and 5) for the correct setup of these Guy Rods.



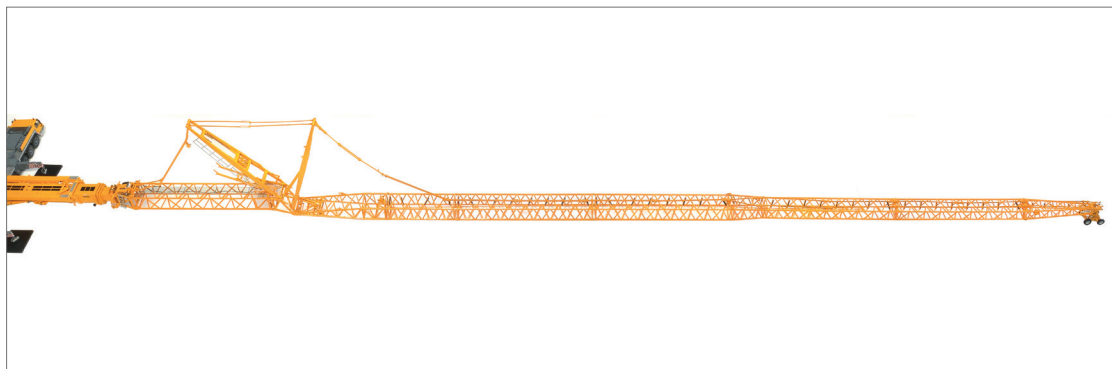
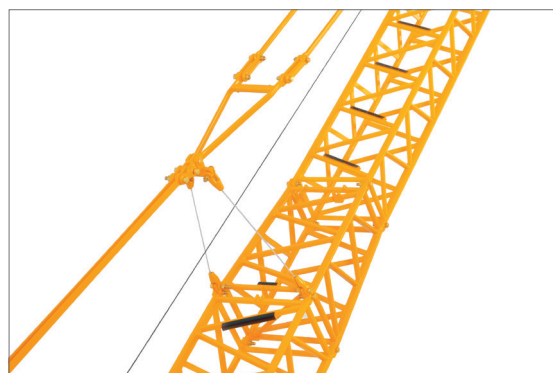
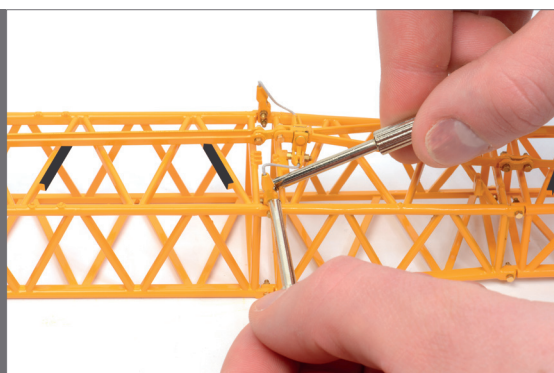
Step 4

Attach Guy Rods 4, 2 and 1 to each other. Please see picture beside for correct connection. Guy Rod 4 must be connected to Part 12 (9,5 m N-Shaped Base Section) and Guy Rod 1 must be connected to Part 18 (8m N Head Section). Guy Rod 2 sits in between Guy Rod 1 and 4.



Step 5

Mount the Jib Guying Ropes to the eyelets of Part 15 (3,5m NI Reduction Section).



Optional

To erect the jib in a realistic way, please lay the jib head (Part 18) into the pulley cart (Part 1).



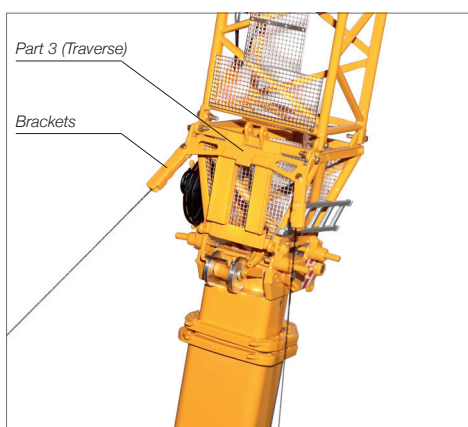
Step 6

Erect the boom with the connected jib and extend the telescopic boom to the required length. Then lean the jib against a wall or ask a second person to hold the jib while connecting the TY-System and Pulley Block.



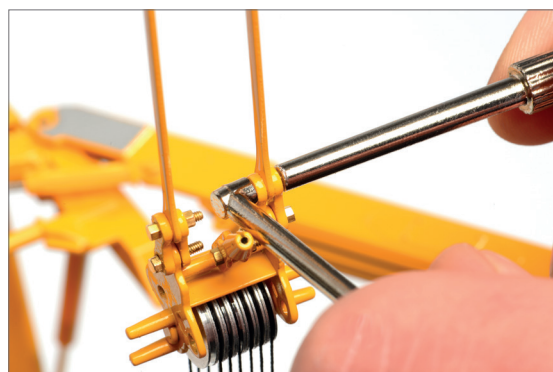
Step 7

Erect the TY-guying system and fold out the TY-frames to the left and right. Loosen the winches on the TY-frames to release the brackets of the TY-guying system and connect these to the traverse (Part 3).



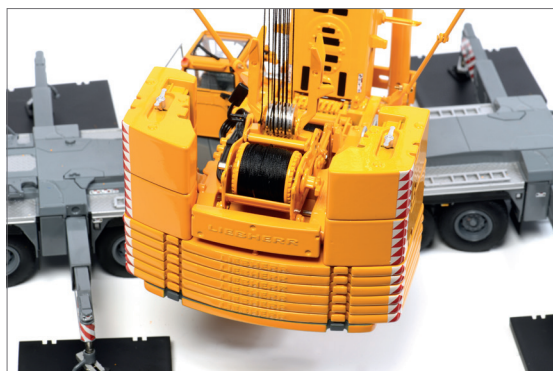
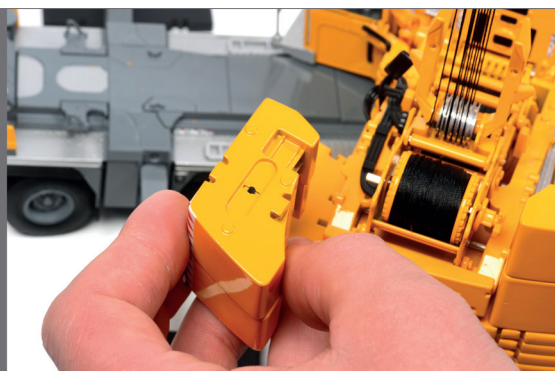
Step 8

Unspool the rope of winch 3 to bring the pulley block to the guy rod (Part 24) which is connected to the 9,5 m N-shaped base section (Part 12) and fix it with bolts and nuts. Keep tension on the ropes while you unspool it.



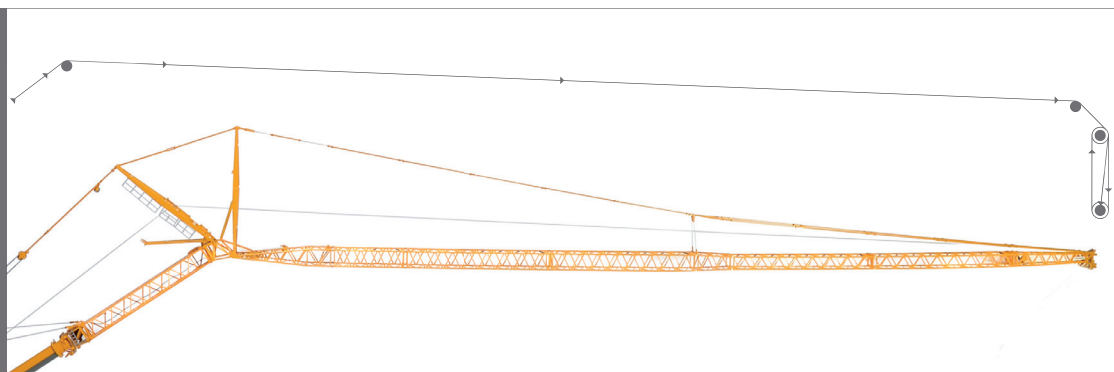
Step 9

Mount the ballast blocks (15 t) to the right and left side of the winch frame to avoid that the crane is tipping over. After attaching the complete ballast you can turn the superstructure away from the wall and the crane will stand stable.



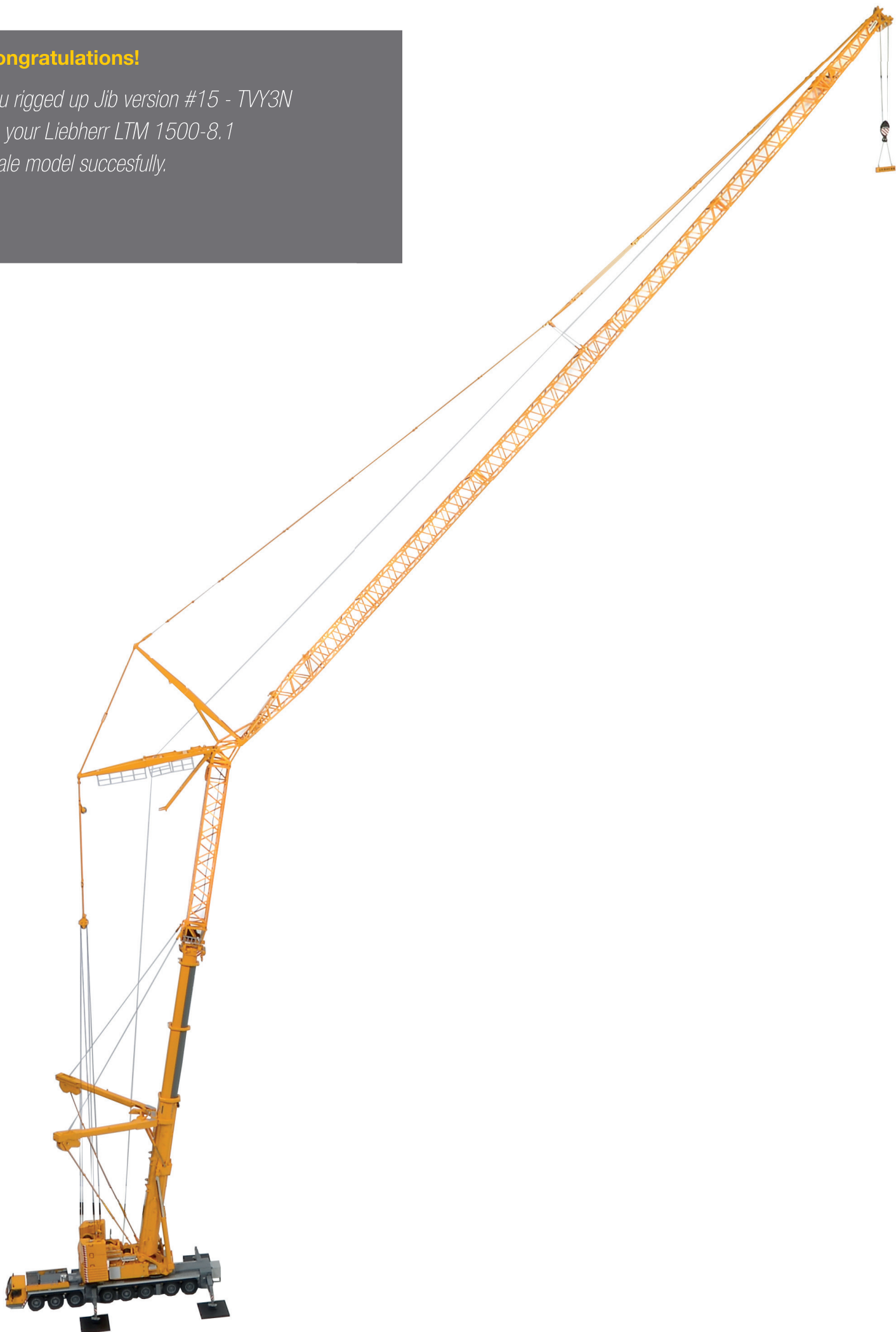
Step 10

Reeve in the hoist rope as shown on the reeving plan at the right picture.



Congratulations!

*You rigged up Jib version #15 - TVY3N
on your Liebherr LTM 1500-8.1
scale model succesfully.*

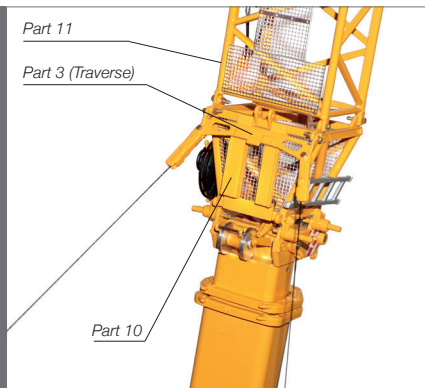


Some examples to connect the 3 different TY-Guying adapters:

1

Example for Part 3 (Traverse)
connected to Part 10

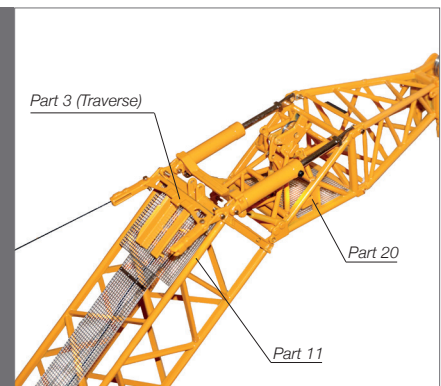
This setup is used for
configurations #6, #7, #14,
#15, #21, #22 and #26



2

Example for Part 3 (Traverse)
connected to Part 11

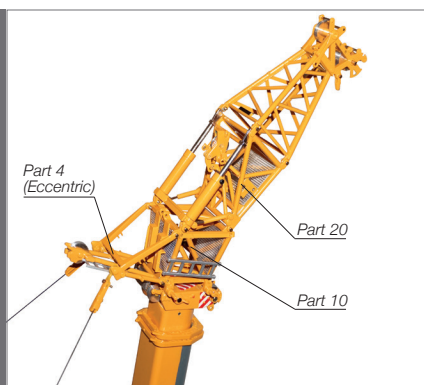
This setup is used for
configurations #10 and #11



3

Example for Part 4 (Eccentric)
connected to Part 10

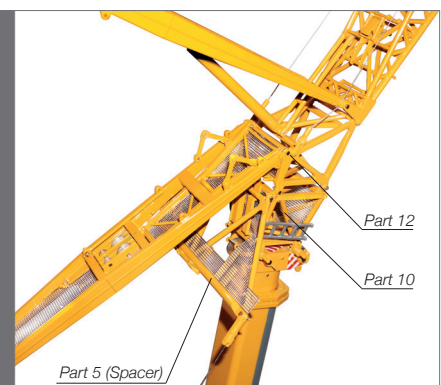
This setup is used for
configurations #8, #9, #23
and #24



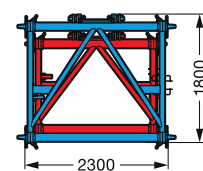
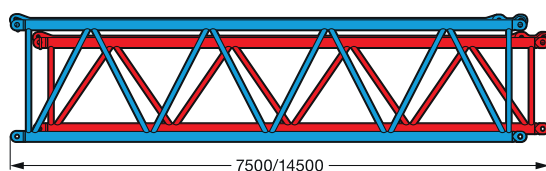
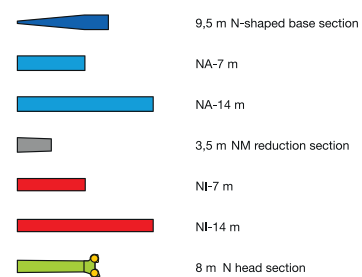
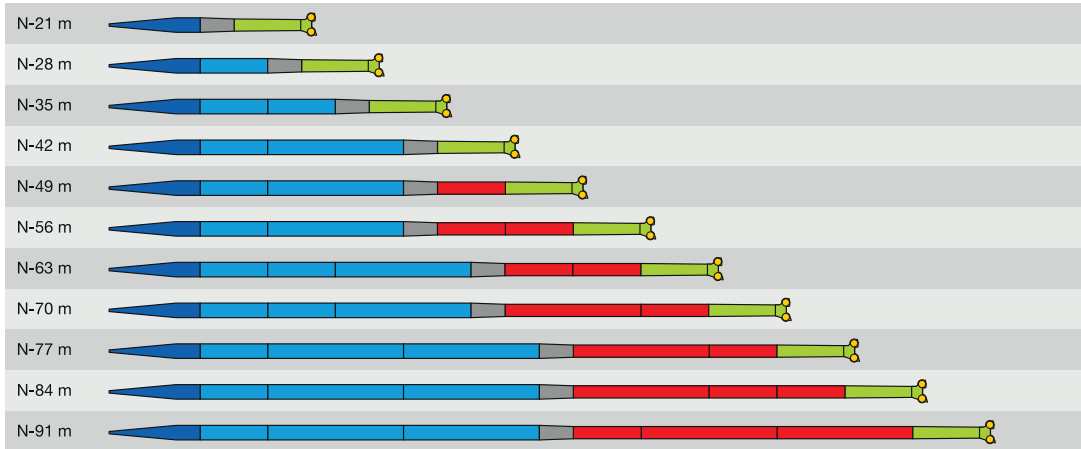
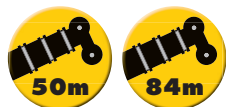
4

Example for Part 4 (Spacer)
connected to Part 10

This setup is used for
configurations #16 and #27



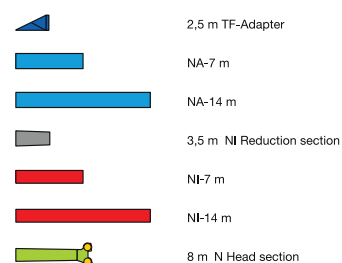
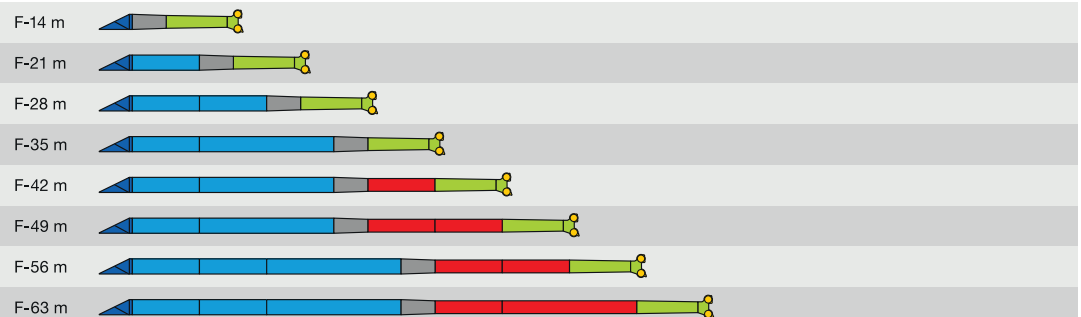
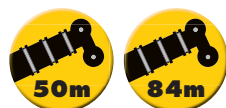
Boom/jib combinations Luffing fly jib



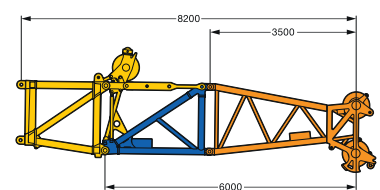
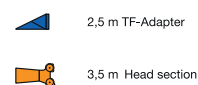
S2773

S2517

Boom/jib combinations Fixed fly jib



F-6 m

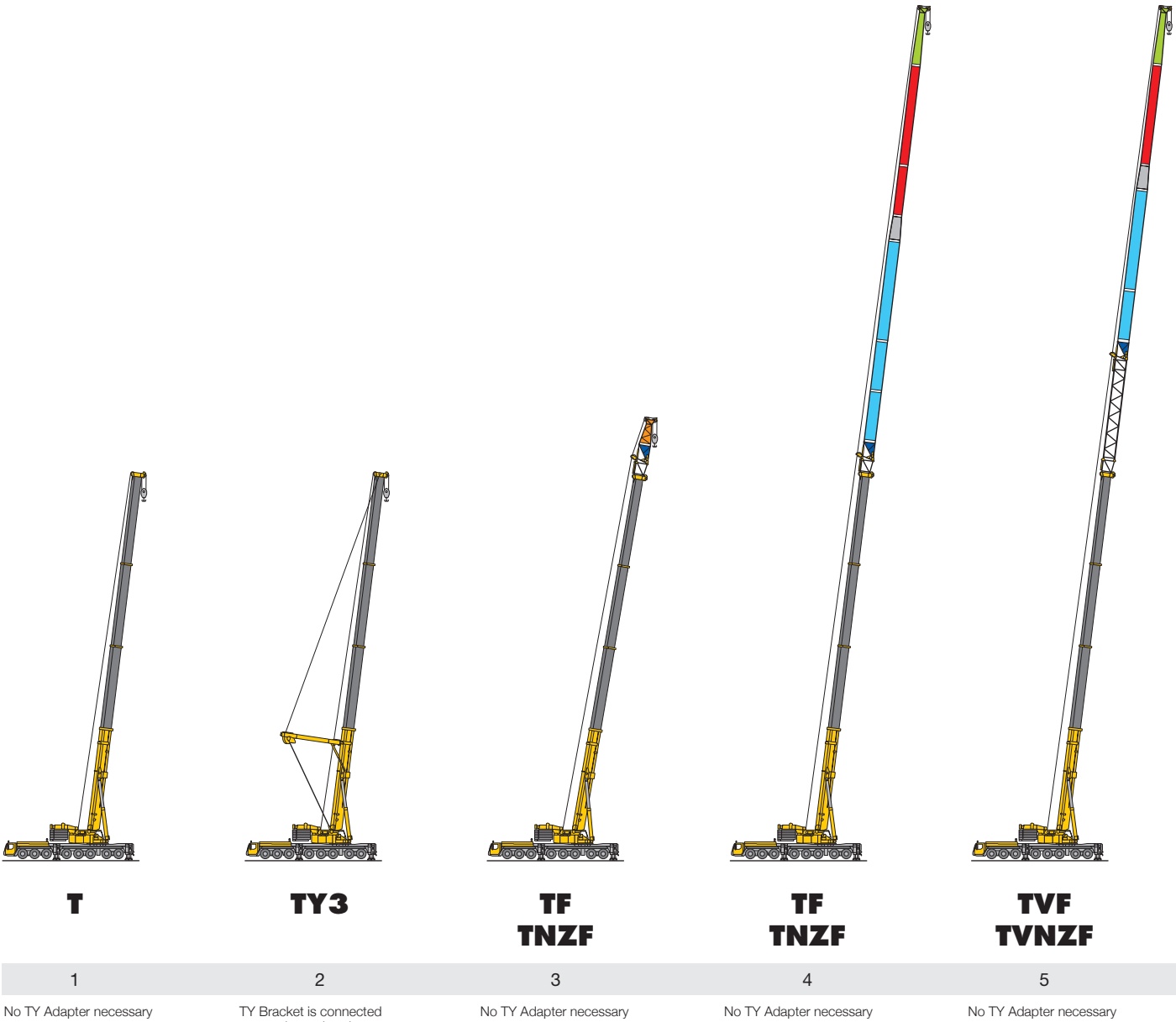


S2772

S2792

Boom/jib combinations

- T** Telescopic boom
- Y3** Y-shaped guying system
- F** Fixed lattice jib
- NZF** Hydraulically adjustable lattice jib



Boom/jib combinations

- N Luffing fly jib
- V Telescopic boom extension
- E Eccentric
- S Spacer



**TY3F
TY3NZF**

**TY3F
TY3NZF**

**TY3EF
TY3ENZF**

**TY3EF
TY3ENZF**

TVY3NZF

**TVY3F
TVY3NZF**

6

7

8

9

10

11

Use TY-Guying TRAVERSE

Use TY-Guying TRAVERSE

UseTY-Guying ECCENTRIC

Use TY-Guying ECCENTRIC

Use TY-Guying TRAVERSE

Use TY-Guying TRAVERSE

Boom/jib combinations



This is the example version shown in this manual



TN

TVN

TY3N

TVY3N

TY3SN

12	13	14	15	16
No TY Adapter necessary	No TY Adapter necessary	Use TY-Guying TRAVERSE	Use TY-Guying TRAVERSE	Use TY-Guying SPACER

S2706.02

Boom/jib combinations

- T** Telescopic boom
- Y3** Y-shaped guying system
- F** Fixed lattice jib
- NZF** Hydraulically adjustable lattice jib



T

TY3

**TF
TNZF**

**TF
TNZF**

**TY3F
TY3NZF**

**TY3F
TY3NZF**

17

18

19

20

21

22

No TY Adapter necessary

TY Bracket is connected to boom head

No TY Adapter necessary

No TY Adapter necessary

Use TY-Guying TRAVERSE

Use TY-Guying TRAVERSE

Boom/jib combinations

- N Luffing fly jib
- E Eccentric
- S Spacer



TY3EF TY3ENZF	TY3EF TY3ENZF	TN	TY3N	TY3SN
23	24	25	26	27
Use TY-Guying ECCENTRIC	Use TY-Guying ECCENTRIC	No TY Adapter necessary	Use TY-Guying TRAVERSE	Use TY-Guying SPACER

S2708.02

