

Retracting the boom

Make sure the boom is 90% extended, otherwise you cannot slide it back in. The boom contains three locking pins



Locking pin #3

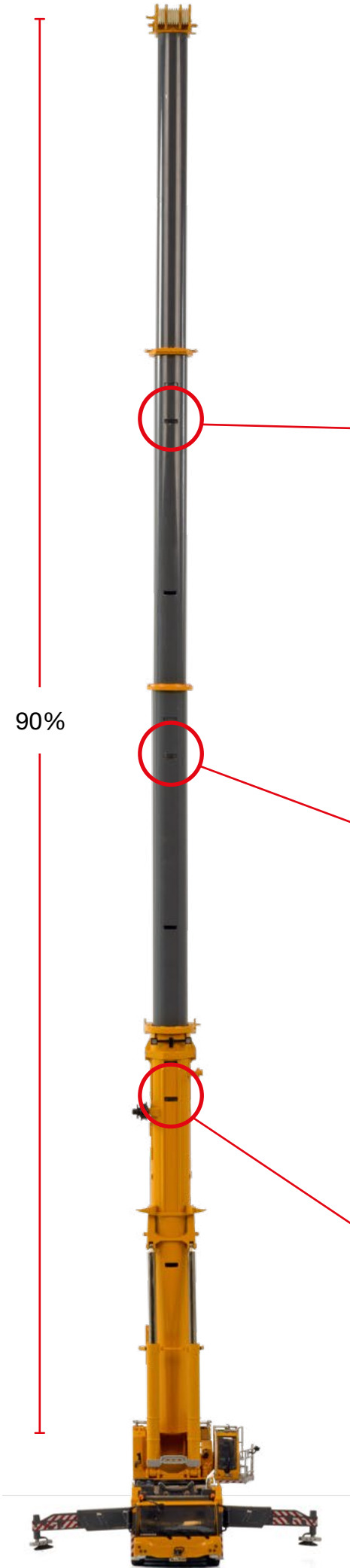


Locking pin #2



Locking pin #1

90%





② Slide down

① Push



② Slide down

① Push



② Slide down

① Push



② Slide down

① Push



② Slide down



① Push



② Slide down



① Push

End position

You can now unlock the boom and put it back down in transport position.

